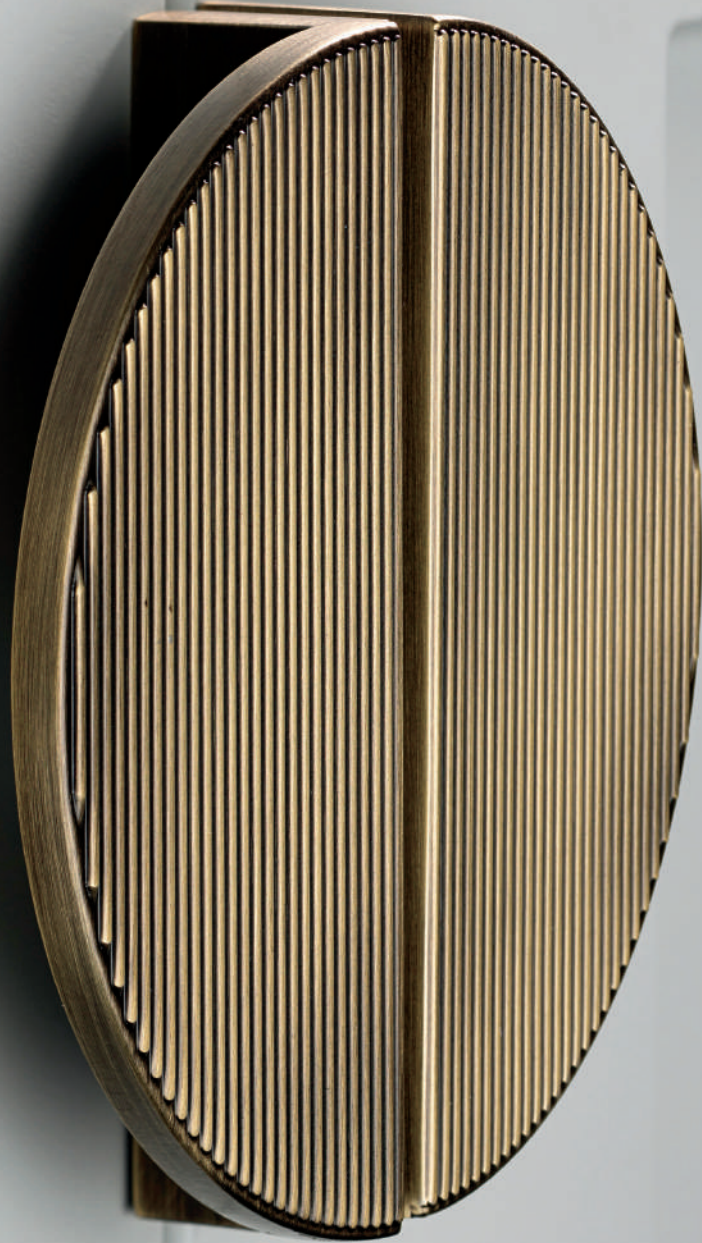
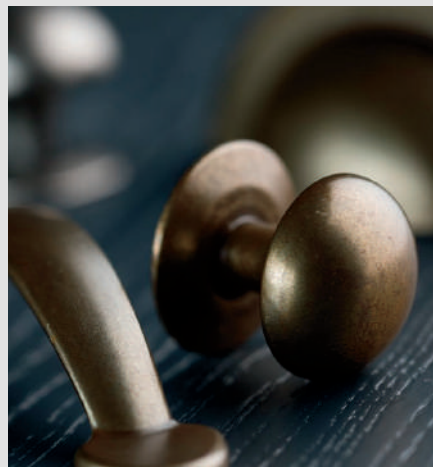
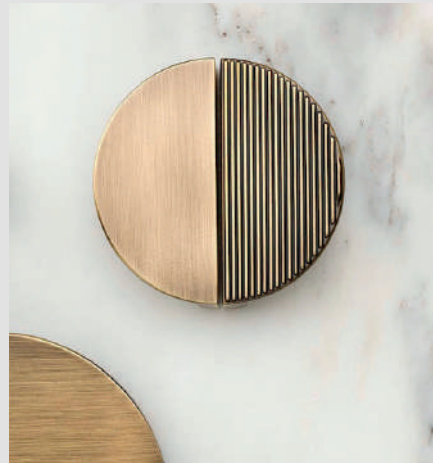




HENDEL & HENDEL



2025 PRODUCT CATALOG



MarVista Hardware of Sarasota and Naples is proud to represent Hendel & Hendel on Florida's Suncoast.



# CONTENTS

---



Page 5

Finishes

Page 6 - 7

Belgravia

Page 8 - 9

Liberty

Page 10 - 11

Callcott

Page 12 - 13

Barrington

Page 14 - 15

Barrington Eclipse

Page 16 - 17

Hampton

Page 18 - 19

Fitzrovia

Page 20 - 21

Pembrey

Page 22 - 23

Trafalgar

Page 24 - 25

Finsbury

Page 26

Lumi

Page 27

Fleur

Page 28

Ilsa / Ivo

Page 29

Hinges

Page 30

Magnetic Catches



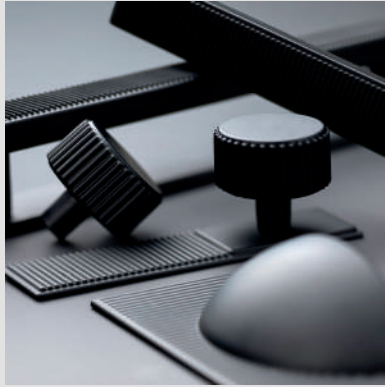


# FINISHES

---



Brushed Satin Brass (BSB)



Matt Black (MB)



Polished Nickel (PN)



Dark Brushed Brass (DBB)



Bronze (BRO)



Satin Brass Lacquered (SBL)



Antique Brass (AB)



Antique Pewter (AP)



Dull Nickel (DN)

Information regarding finishes available for each range can be found on product pages throughout this brochure.



## BELGRAVIA

---

Featuring striking knurled detailing and bold wrap around clasps, Belgravia has been designed and crafted to exacting standards. Made from Solid Brass.

### FINISHES



SATIN BRASS LACQUERED  
(SBL)



## 35MM KNOB

CODE: GBELK035

FINISH CODE

SBL

PROJECTION	DIAMETER
38MM	35MM



## 82MM T - BAR KNOB

CODE: GBELK082

FINISH CODE

SBL

PROJECTION	OVERALL LENGTH	BAR THICKNESS
38MM	82MM	14MM



## 160MM PULL HANDLE

CODE: GBELP160

FINISH CODE

SBL

HOLE CENTRES	PROJECTION	OVERALL LENGTH	BAR THICKNESS
160MM	38MM	242MM	14MM



## 320MM PULL HANDLE

CODE: GBELP320

FINISH CODE

SBL

HOLE CENTRES	PROJECTION	OVERALL LENGTH	BAR THICKNESS
320MM	38MM	402MM	14MM

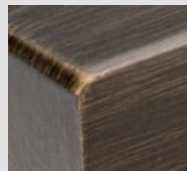


## LIBERTY

---

This sleek, minimalist pull collection features an optional stepped backplate and is available in two sizes to suit a range of applications.

## FINISHES



DARK BRUSHED BRASS  
(DBB)



POLISHED NICKEL  
(PN)



160MM PULL HANDLE

CODE: GLIBD160

FINISH CODE

DBB PN

HOLE CENTRES	PROJECTION	OVERALL LENGTH	WIDTH X HEIGHT
160MM	29MM	172MM	12MM X 12MM

320MM PULL HANDLE

CODE: GLIB320

FINISH CODE

DBB PN

HOLE CENTRES	PROJECTION	OVERALL LENGTH	WIDTH X HEIGHT
320MM	29MM	332MM	12MM X 12MM

160MM BACKPLATE FOR PULL HANDLE

CODE: GU01BP160

FINISH CODE

DBB PN

HOLE CENTRES	OVERALL LENGTH	WIDTH	BACKPLATE THICKNESS
160MM	190MM	25MM	4MM

160MM BACKPLATE FOR PULL HANDLE

CODE: GU02BP320

FINISH CODE

DBB PN

HOLE CENTRES	OVERALL LENGTH	WIDTH	BACKPLATE THICKNESS
320MM	350MM	25MM	4MM

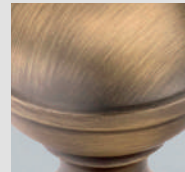


# CALLCOTT

Quintessentially British, this heritage collection personifies Hende & Hende's philosophy of dedicated design and craftsmanship. Hand finished, the cup and knob combination incorporates defining stepped details on the back plate to add a unique touch.

Made from solid brass.

## FINISHES



DARK BRUSHED BRASS  
(DBB)



POLISHED NICKEL  
(PN)



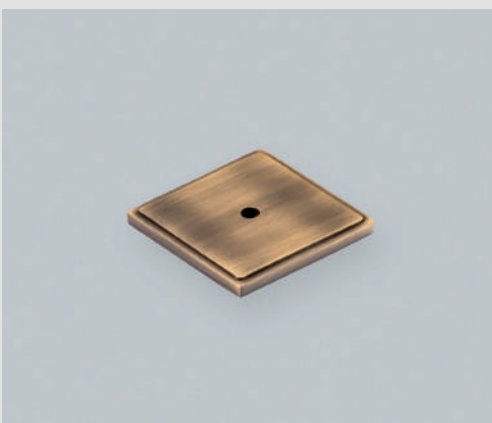
### 34MM KNOB

CODE: GCALK034

#### FINISH CODE

DBB PN

PROJECTION	DIAMETER
33MM	34MM



### 38MM SQUARE BACKPLATE

CODE: GCALBP038

#### FINISH CODE

DBB PN

BACKPLATE SIZE	BACKPLATE THICKNESS
38MM X 38MM	4MM

76MM RECTANGLE BACKPLATE



CODE: GCALBP076

FINISH CODE

DBB PN

BACKPLATE SIZE	BACKPLATE THICKNESS
76MM X 38MM	4MM

64MM CUP HANDLE



CODE: GCALC064

FINISH CODE

DBB PN

HOLE CENTRES	PROJECTION	OVERALL LENGTH	HEIGHT
64MM	21MM	92MM	40MM

128MM CUP HANDLE



CODE: GCALC128

FINISH CODE

DBB PN

HOLE CENTRES	PROJECTION	OVERALL LENGTH	HEIGHT
128MM	21MM	156MM	40MM

192MM CUP HANDLE



CODE: GCALC192

FINISH CODE

DBB PN

HOLE CENTRES	PROJECTION	OVERALL LENGTH	HEIGHT
192MM	21MM	220MM	40MM



# BARRINGTON

This signature collection features a striking ribbed texture, taking elements of inspiration from Art Deco design. With its bold industrial flair and fine details, the Barrington collection makes a statement.

## FINISHES



BRONZE  
(BRO)



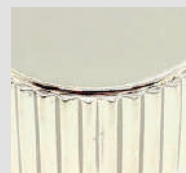
BRUSHED SATIN BRASS  
(BSB)



DARK BRUSHED BRASS  
(DBB)



MATT BLACK  
(MBL)



POLISHED NICKEL  
(PN)



### 64MM CUP HANDLE

CODE: GBAC064

#### FINISH CODE

BRO BSB DBB MBL PN

HOLE CENTRES	PROJECTION	OVERALL LENGTH	HEIGHT
64MM	24MM	105MM	45MM





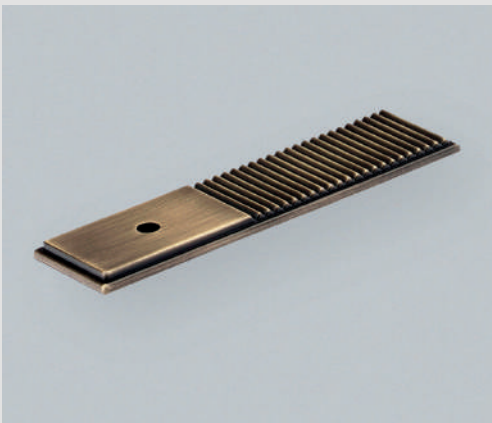
## 32MM KNOB

CODE: GBAK032

### FINISH CODE

BRO BSB DBB MBL PN

PROJECTION	DIAMETER
29MM	32MM



## 100MM BACKPLATE FOR KNOB

CODE: GBABP100

### FINISH CODE

BRO BSB DBB MBL PN

OVERALL LENGTH	WIDTH	BACKPLATE THICKNESS
100MM	25MM	4MM



## 160MM PULL HANDLE

CODE: GBAP160

### FINISH CODE

BRO BSB DBB MBL PN

HOLE CENTRES	PROJECTION	OVERALL LENGTH	BAR THICKNESS
160MM	30MM	180MM	20MM X 9MM



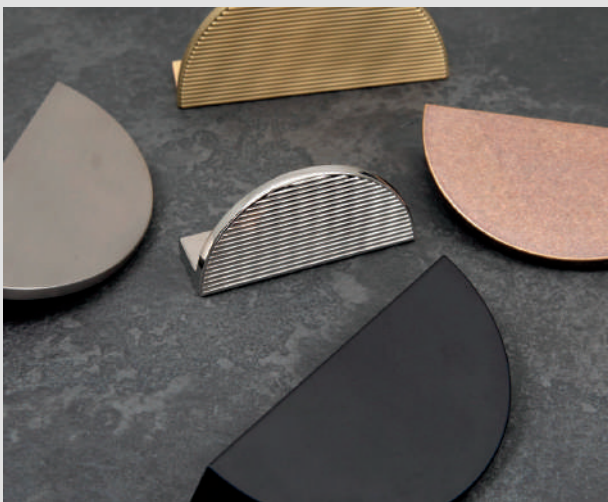
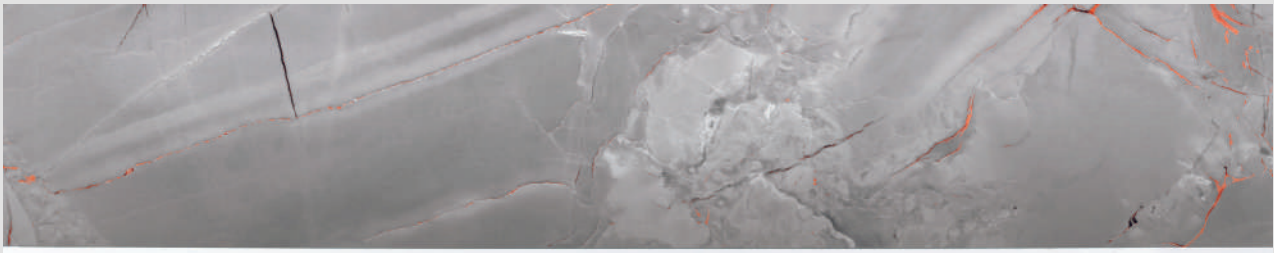
## 160MM BACKPLATE FOR PULL HANDLE

CODE: GU01BP160

### FINISH CODE

BRO BSB DBB MBL PN

HOLE CENTRES	OVERALL LENGTH	WIDTH	BACKPLATE THICKNESS
160MM	190MM	25MM	4MM



## BARRINGTON ECLIPSE

A statement pull designed as part of the Barrington collection. The Eclipse can be used as a stand alone, half-moon shape or, when fitted side by side, a full moon. Mix and match the smooth and ribbed texture to create your own statement.

### FINISHES



POLISHED NICKEL  
(PN)



DARK BRUSHED BRASS  
(DBB)



BRUSHED SATIN BRASS  
(BSB)



BRONZE  
(BRO)

# BARRINGTON ECLIPSE



## 64MM RIBBED PULL HANDLE

CODE: GBETP064

### FINISH CODE

PN DBB BSB BRO

HOLE CENTRES	PROJECTION	OVERALL LENGTH	HEIGHT
64MM	26MM	80MM	40MM



## 64MM SMOOTH PULL HANDLE

CODE: GBEPP064

### FINISH CODE

PN DBB BSB BRO

HOLE CENTRES	PROJECTION	OVERALL LENGTH	HEIGHT
64MM	26MM	80MM	40MM



## 96MM RIBBED PULL HANDLE

CODE: GBETP096

### FINISH CODE

PN DBB BSB BRO

HOLE CENTRES	PROJECTION	OVERALL LENGTH	HEIGHT
96MM	26MM	112MM	56MM



## 96MM SMOOTH PULL HANDLE

CODE: GBEPP096

### FINISH CODE

PN DBB BSB BRO

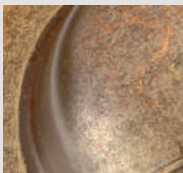
HOLE CENTRES	PROJECTION	OVERALL LENGTH	HEIGHT
96MM	26MM	112MM	56MM



## HAMPTON

A modern classic, precisely designed with a slight twist. The extended cup has smooth, soft lines and is paired with a one-piece matching cabinet knob.

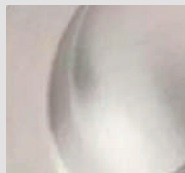
## FINISHES



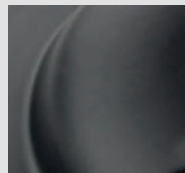
BRONZE  
(BRO)



BRUSHED SATIN BRASS  
(BSB)



DULL NICKEL  
(DN)



MATT BLACK  
(MBL)



POLISHED NICKEL  
(PN)





## 32MM KNOB

CODE: GHAK032

### FINISH CODE

BRO BSB DN MBL PN

PROJECTION	DIAMETER
37MM	32MM



## 96MM CUP HANDLE

CODE: GHAC096

### FINISH CODE

BRO BSB DN MBL PN

HOLE CENTRES	PROJECTION	OVERALL LENGTH	HEIGHT
96MM	23MM	122MM	39MM



## 160MM PULL HANDLE

CODE: GHAC160

### FINISH CODE

BRO BSB DN MBL PN

HOLE CENTRES	PROJECTION	OVERALL LENGTH	HEIGHT
160MM	24MM	195MM	42MM



## 160MM D HANDLE

CODE: GHAD160

### FINISH CODE

BRO BSB DN MBL PN

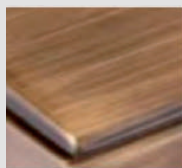
HOLE CENTRES	PROJECTION	OVERALL LENGTH	WIDTH X THICKNESS
160MM	27MM	167MM	17MM X 5MM



## FITZROVIA

Influenced by Art Deco design, Fitzrovia is characterized by distinct stepped detailing and the perfect art of symmetry. Each of the five pieces include matching backplates, creating a striking silhouette when set in context. Made from solid brass.

## FINISHES



DARK BRUSHED BRASS  
(DBB)



POLISHED NICKEL  
(PN)



### 34MM KNOB WITH BACKPLATE

CODE: GFITK034

#### FINISH CODE

DBB PN

PROJECTION	DIAMETER	BACKPLATE THICKNESS
34MM	34MM	5MM

82MM T BAR + BACKPLATE



CODE: GFITK082

FINISH CODE

DBB PN

PROJECTION	OVERALL LENGTH	WIDTH X HEIGHT	BACKPLATE THICKNESS
34MM	82MM	20MM X 10MM	5MM

160MM PULL HANDLE WITH BACKPLATES



CODE: GFITP160

FINISH CODE

DBB PN

HOLE CENTRES	PROJECTION	OVERALL LENGTH	WIDTH X HEIGHT	BACKPLATE THICKNESS
160MM	34MM	240MM	20MM X 10MM	5MM

320MM PULL HANDLE WITH BACKPLATES



CODE: GFITP320

FINISH CODE

DBB PN

HOLE CENTRES	PROJECTION	OVERALL LENGTH	WIDTH X HEIGHT	BACKPLATE THICKNESS
320MM	34MM	400MM	20MM X 10MM	5MM

608MM PULL HANDLE WITH BACKPLATES



CODE: GFITP608

FINISH CODE

DBB PN

HOLE CENTRES	PROJECTION	OVERALL LENGTH	WIDTH X HEIGHT	BACKPLATE THICKNESS
608MM	34MM	688MM	20MM X 10MM	5MM



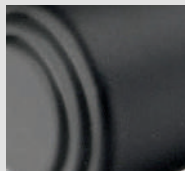
## PEMBREY

This timeless collection features concentric detailing and a flared foot design, perfectly suited to both slab and shaker cabinetry.

## FINISHES



BRONZE  
(BRO)



MATT BLACK  
(MBL)



DARK BRUSHED BRASS  
(DBB)



POLISHED NICKEL  
(PN)





82MM T - BAR KNOB

PEMBREY

CODE: GPEK082

FINISH CODE

BRO MBL DBB PN

PROJECTION	OVERALL LENGTH	BAR THICKNESS
37MM	82MM	19MM



128MM BAR HANDLE

CODE: GPEB128

FINISH CODE

BRO MBL DBB PN

HOLE CENTRES	PROJECTION	OVERALL LENGTH	BAR THICKNESS
128MM	37MM	210MM	12MM



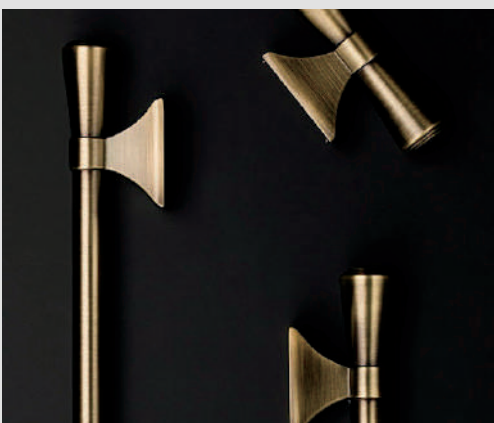
320MM BAR HANDLE

CODE: GPEB320

FINISH CODE

BRO MBL DBB PN

HOLE CENTRES	PROJECTION	OVERALL LENGTH	BAR THICKNESS
320MM	37MM	402MM	12MM





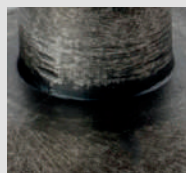
## TRAFALGAR

A timeless classic, reinvented. Featuring sophisticated curves and exquisite finishes. This is an essential collection, manufactured with meticulous care and attention to fine detail.

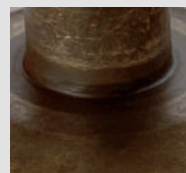
### FINISHES



POLISHED NICKEL  
(PN)



ANTIQUÉ PEWTER  
(AP)



BRONZE  
(BRO)

## 38MM KNOB



CODE: GTRK038

### FINISH CODE

BRO PN AP

PROJECTION	DIAMETER
37MM	38MM

## 64MM CUP HANDLE



CODE: GTRC064

### FINISH CODE

BRO PN AP

HOLE CENTRES	PROJECTION	OVERALL LENGTH	HEIGHT
64MM	29MM	102MM	47MM

## 96MM BOW HANDLE



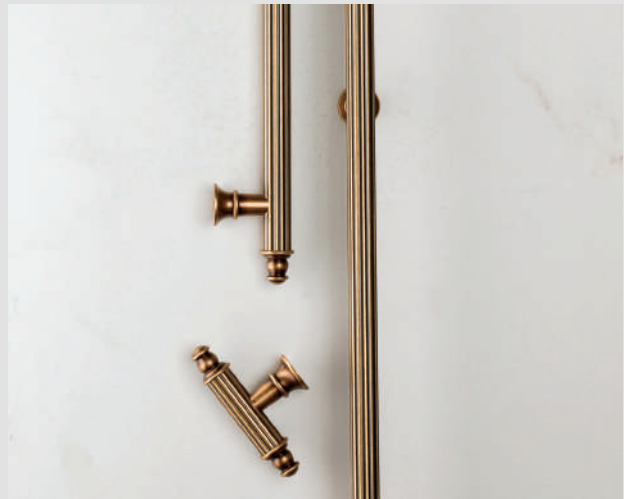
CODE: GTRB096

### FINISH CODE

BRO PN AP

HOLE CENTRES	PROJECTION	OVERALL LENGTH	WIDTH X HEIGHT
96MM	27MM	142MM	18MM X 6MM





## FINSBURY

Made from the finest grade solid brass. This majestic collection is designed to captivate. Featuring a detailed linear bar, finial ends and fluted posts.

## FINISHES



ANTIQUÉ BRASS  
(AB)



## 78MM T - BAR KNOB



CODE: GFIK078AB

FINISH CODE

AB

PROJECTION	OVERALL LENGTH	BAR THICKNESS
40MM	78MM	14MM

## 160MM BAR HANDLE



CODE: GFIB160AB

FINISH CODE

AB

HOLE CENTRES	PROJECTION	OVERALL LENGTH	BAR THICKNESS
160MM	40MM	238MM	14MM

## 448MM BAR HANDLE



CODE: GFIB448AB

FINISH CODE

AB

HOLE CENTRES	PROJECTION	OVERALL LENGTH	BAR THICKNESS
448MM	40MM	526MM	14MM



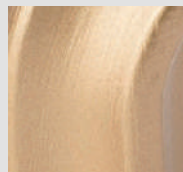


# LUMI

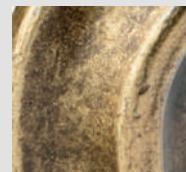
With its unique shape and clean linear detailing, this collection personifies transitional. The design is perfectly proportioned and beautifully tactile.

Made from Zamac.

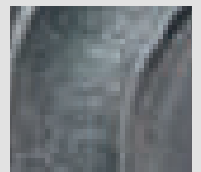
## FINISHES



BRUSHED SATIN BRASS  
(BSB)



ANTIQUÉ BRASS  
(AB)



ANTIQUÉ PEWTER  
(AP)



### 160MM D HANDLE

CODE: GLUD160

#### FINISH CODE

BSB AB AP

HOLE CENTRES	PROJECTION	OVERALL LENGTH	BAR THICKNESS
160MM	33MM	173MM	13MM



### 320MM D HANDLE

CODE: GLUD320

#### FINISH CODE

BSB AB AP

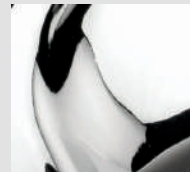
HOLE CENTRES	PROJECTION	OVERALL LENGTH	BAR THICKNESS
320MM	33MM	334MM	13MM



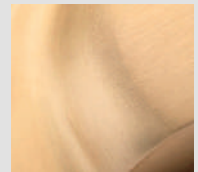
# FLEUR

This beautiful two-piece collection features elegant soft lines that work perfectly on shaker cabinetry.

## FINISHES



POLISHED NICKEL  
(PN)



BRUSHED SATIN BRASS  
(BSB)



### 32MM KNOB

CODE: GFLK032

#### FINISH CODE

PN BSB

DIAMETER	PROJECTION
32MM	34MM



### 96MM CUP HANDLE

CODE: GFLC096

#### FINISH CODE

PN BSB

HOLE CENTRES	PROJECTION	OVERALL LENGTH	HEIGHT
96MM	19MM	139MM	31MM



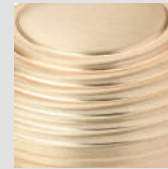
# ILSA

This Ilsa design features confident lines that will add that final flourish to your room.  
Made from zamac

## FINISHES



POLISHED NICKEL (PN)



BRUSHED SATIN BRASS (BSB)



### 38MM KNOB

CODE: GILK038

#### FINISH CODE

PN BSB

DIAMETER	PROJECTION
38MM	45MM



# IVO

A bold, yet elegant design, Ivo features circular detailing, well suited traditional cabinetry.  
Made from Aluminium

## FINISHES



BRONZE (BRO)



POLISHED NICKEL (PN)



BRUSHED SATIN BRASS (BSB)



### 45MM KNOB

CODE: GIVK045

#### FINISH CODE

PN BSB BRO

DIAMETER	PROJECTION
45MM	32MM



# BURLINGTON

COLLECTION



Supplied with colour matched screws



BRASS BUTT HINGE

CODE: E65-361

FINISH: ANTIQUE BRASS

DIMENSIONS: 63mm x 35mm



BRASS BUTT HINGE

CODE: E65-331

FINISH: POLISHED CHROME

DIMENSIONS: 63mm x 35mm



BRASS BUTT HINGE

CODE: E65-371

FINISH: POLISHED BRASS

DIMENSIONS: 63mm x 35mm



BRASS BUTT HINGE

CODE: E65-341

FINISH: SATIN CHROME

DIMENSIONS: 63mm x 35mm



# BURLINGTON

COLLECTION



Supplied with colour matched screws

Weight capacity 6kg



MAGNETIC CATCH

CODE: F06-804

FINISH: ANTIQUE BRASS

DIMENSIONS: 45mm x 20mm x 14mm



MAGNETIC CATCH

CODE: F06-802

FINISH: POLISHED CHROME

DIMENSIONS: 45mm x 20mm x 14mm



MAGNETIC CATCH

CODE: F06-806

FINISH: POLISHED BRASS

DIMENSIONS: 45mm x 20mm x 14mm



MAGNETIC CATCH

CODE: F06-801

FINISH: SATIN CHROME

DIMENSIONS: 45mm x 20mm x 14mm





HENDEL & HENDEL

MAR VISTA

 DECORATIVE HARDWARE

By Appointment Only - Monday-Friday 9-5  
330 S. Pineapple Avenue - Suite 115 Sarasota, FL 34236

[www.marvistahardware.com](http://www.marvistahardware.com)  
[sales@marvistahardware.com](mailto:sales@marvistahardware.com) 941.271.4600

Catalog 2025